



LIFESTYLE
GALAXIA

A GLITTERING LIFE, AWAITING YOU

Chandrasekharpur, Bhubaneswar

ORERA number- MP/19/2021/00449



a

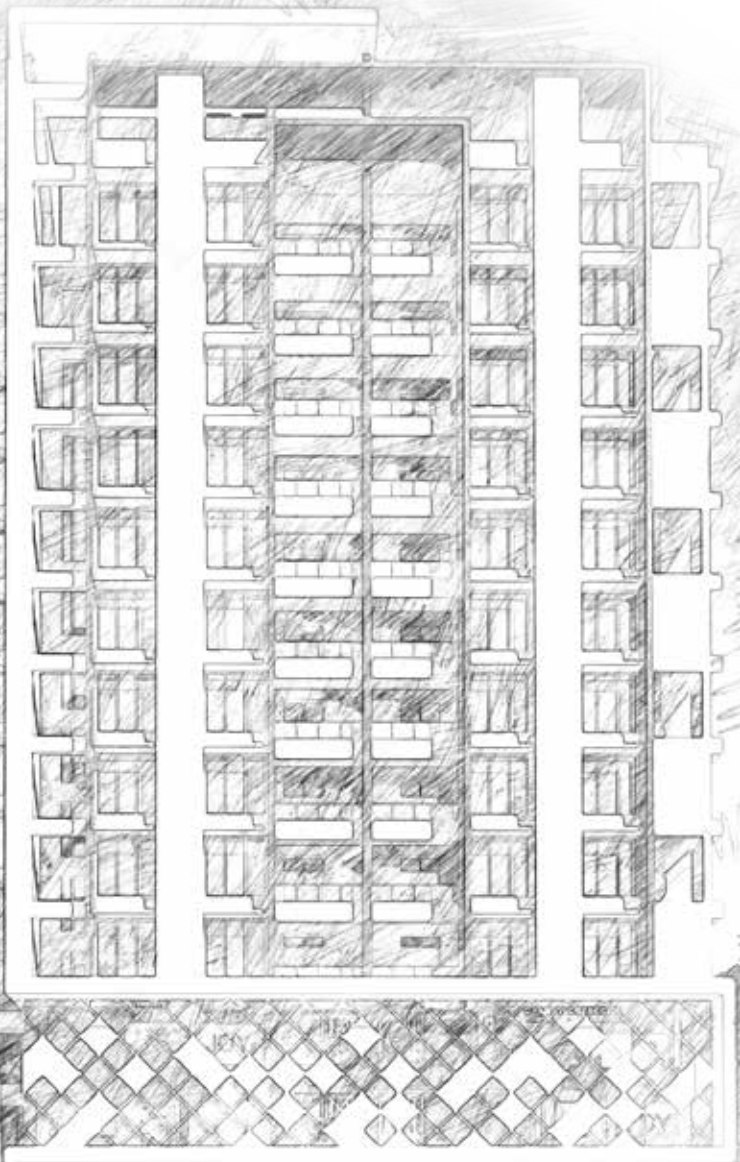
GLITTERY LIFE starts here...

Presenting **Lifestyle Galaxia**, the super premium 3 and 2 bhk homes for your loved ones. Since the world understands “health is wealth”, we have taken no compromise on the safety issues of your home. Built with proper light and ventilation, your home will be a testimony for an ideal living condition. Explore yourself, the possibilities awaits you at your new home.

68 3BHK

24 2BHK

1 Penthouse 8 Commercial Spaces





...a
BEAUTIFUL HOME
awaits you.










a
HEALTHY LIFE
awaits you.





How you bust your stress ?

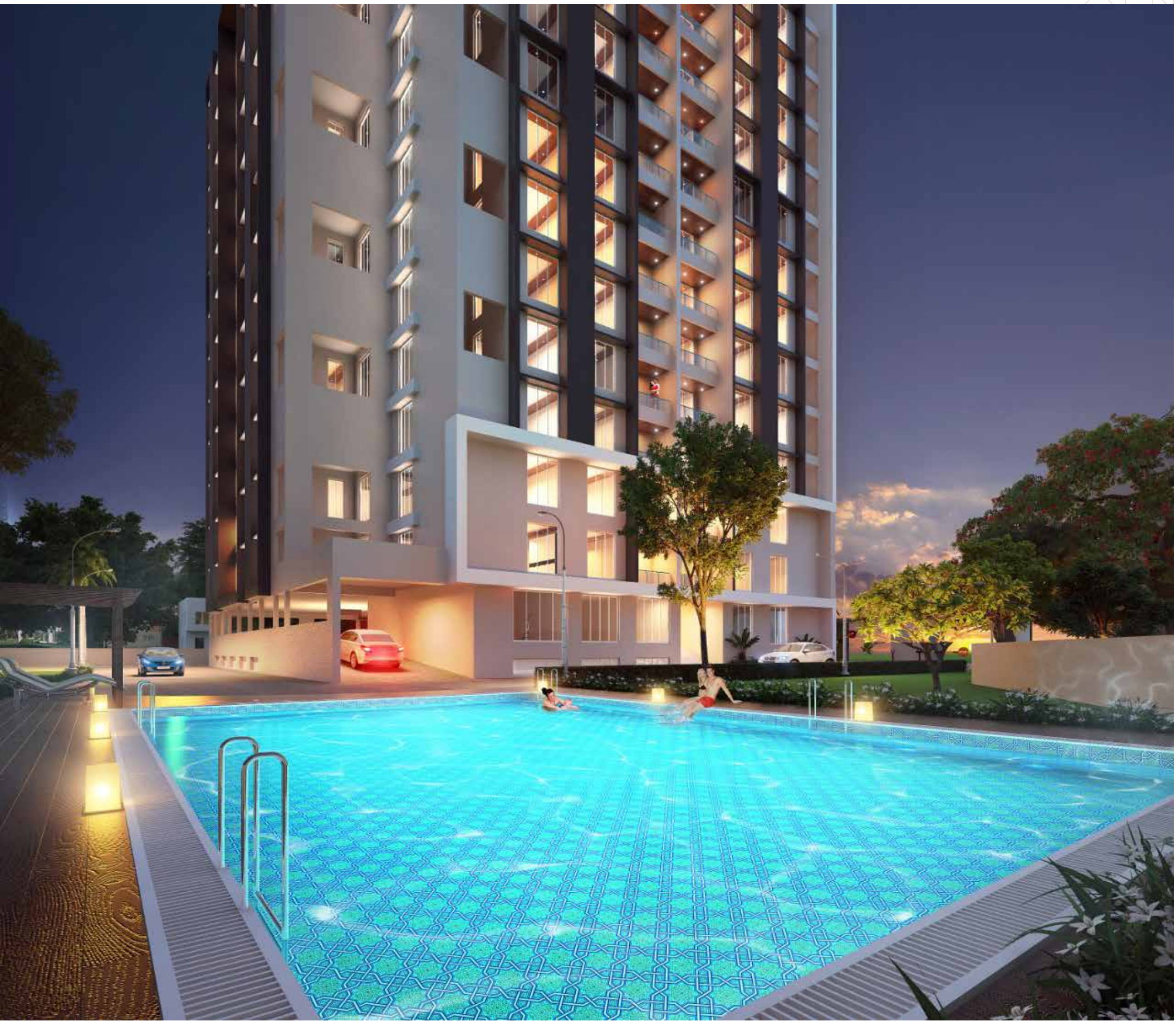
A refreshing dip in the swimming pool or enjoying a cycle ride with your kids or a sweaty workout at the modern gym. Whichever be your favourite activities, Galaxia has it all.

Recreational Features

-  Swimming Pool
-  Gymnasium
-  Air conditioned Multi Purpose Hall
-  Cycle track
-  Children Play Area

Safety and security

-  Round the clock security
-  Surveillance of CCTV cameras at the entrance and lobbies.
-  Fire fighting system
-  Guarded entrance gate with barricade





a
SUSTAINABLE LIFE
awaits you.

How you contribute for protecting nature ?

Based on the philosophy reduce, reuse and recycle, each galaxy home is designed in such a manner that it reduces the overall energy consumption hence reducing carbon footprints.

Features for a sustainable life



Rain water harvesting



Sewage Treatment Plant



Provision for Inverter wiring



DG backup of 500 watt to each flats & 100% to common area



Separate lift for goods and inmates



Solar Water heating 1000 litre per flat



Energy efficient plumbing fixture



Deep bore well with submersible pump set, UGR and Overhead Water Tank on Roof Top with Generator back up



6' Height boundary wall



Caretaker Room with common toilet



BEE certified transformer



LED lights throughout the campus



Garbage decomposter

a
DESIGNER HOME
 awaits you.



Site Map



N



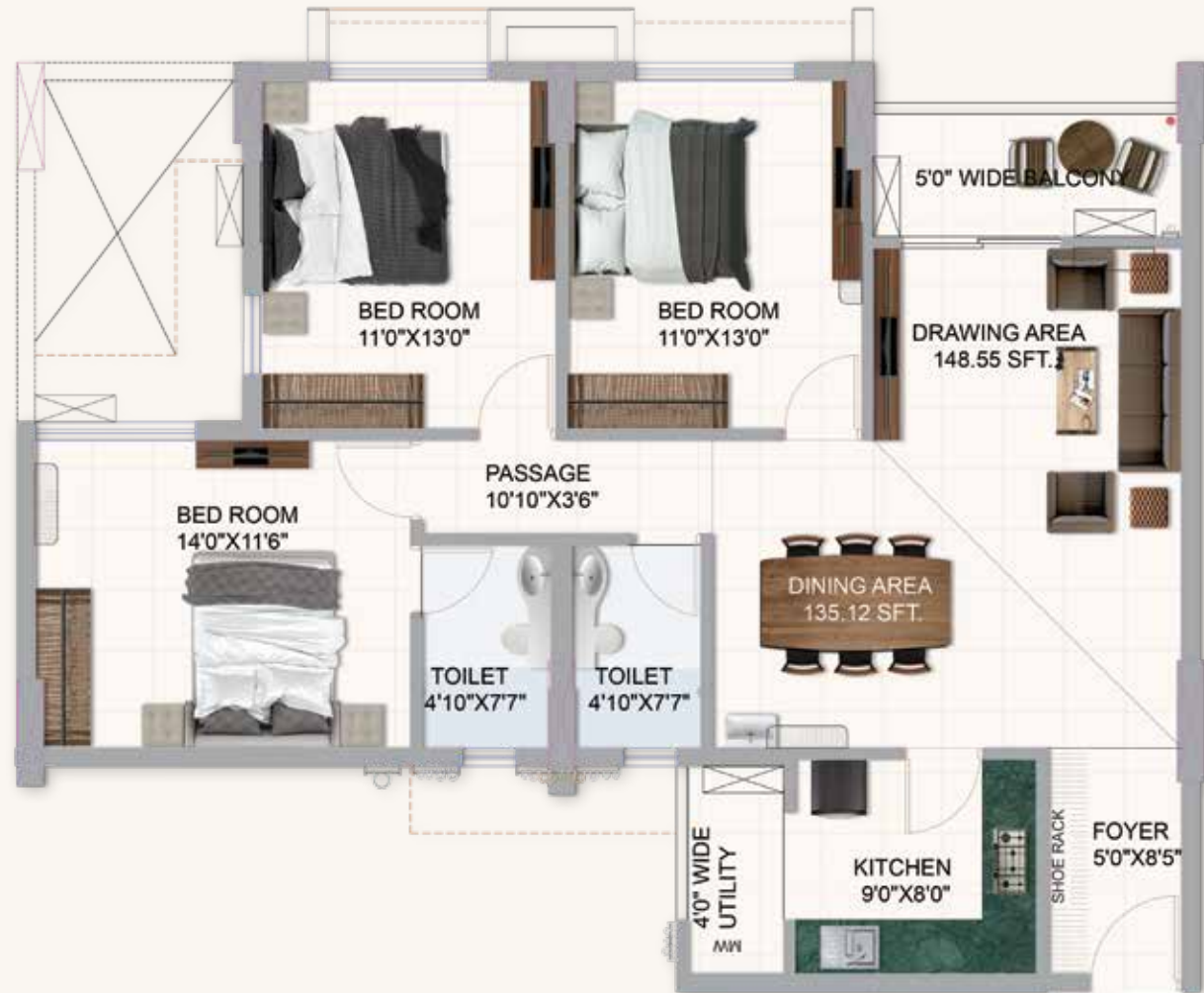
FIRST & SECOND FLOOR PLAN



DETAILS OF Typical 3 BHK

TYPE-A 3 BHK+2 TOILET

B/U AREA	1176 sft
SBA	1702 sft.
CA	999 sft.
EBA	89 sft.



Isometric Visualisation of a 3 BHK home



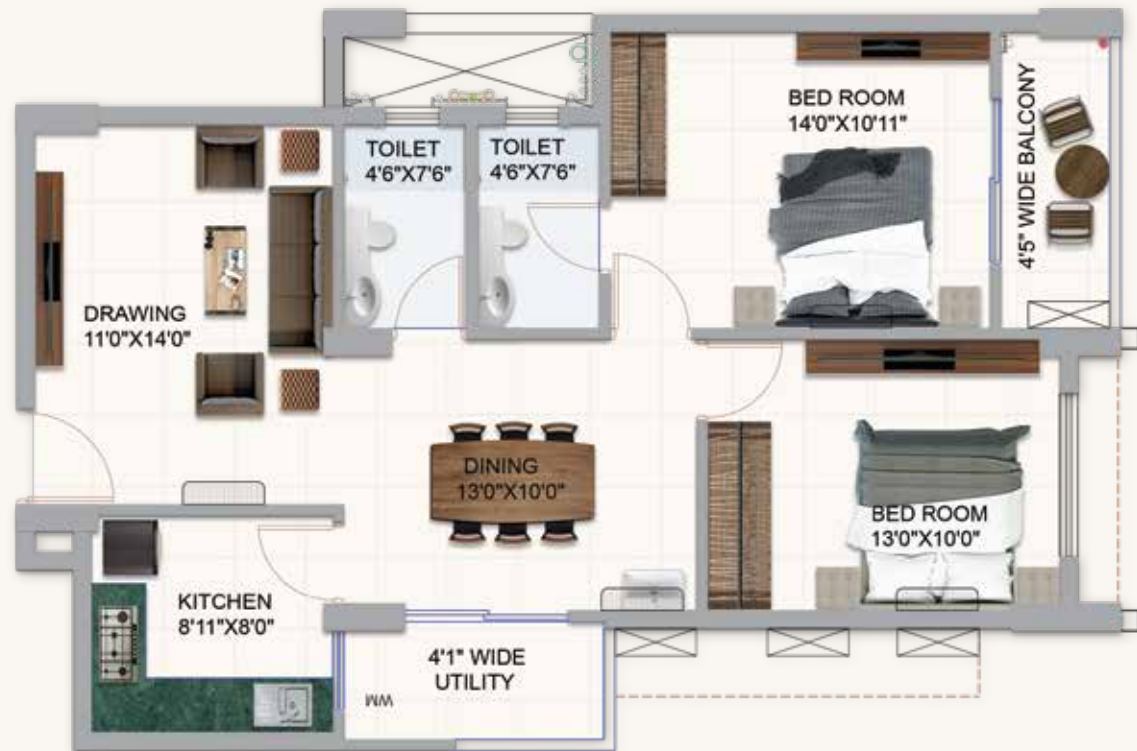
TYPICAL FLOOR PLAN



DETAILS OF Typical 2 BHK

TYPE-B 2 BHK+2 TOILET

B/U AREA	905 sft
SBA	1310 sft.
CA	737 sft.
EBA	93 sft.



Isometric Visualisation of a 2 BHK home





a BLESSED LONG LIFE awaits you



Structure

- M30 grade R.C.C Framed Structure.



Walls

- Red bricks/Fly ash bricks of 8" width for external wall & 5" internal wall.



Flooring and finishes

- Rooms : 4'X2' GVT Tiles (Kajaria/Somany/Johnson)
- Kitchen : 4'X2' GVT Tile flooring, Granite cooking platform with 3' wall tiles and fitted with SS Sink and fittings.
- Toilets : Matt finished 2'X2' vitrified tiles on floor and designer tiles upto 8' height.
- Corridor and lobby : Granite and 2'x2' vitrified tiles
- Staircase : Granite



Doors and Windows

- WPC / Salwood frames of 5"x2.½"
- Teak wood main door of width 32 mm
- WPC / FRP door and chookath for toilets
- Other doors are veneer finish flush doors
- All windows are of aluminum frame with glass and protective ms grill with 50m/s wind resistance.



Lifts

- 4 nos. of Automatic passenger lifts with SS finish
- 1 no. of goods/service lift.
- 1 no. of stretcher lift.
- 1 no. of lift for commercial space.



Electrical

- Concealed wiring with fire retardant wires (Finolex/Polycab), modular switches & sockets (Legrand/Schneider),
- TV and intercom points in living and master bed room.
- Provision of AC point in bedrooms and living room
- Provision of geyser point in all Bathrooms
- Points for grooming kit in toilets
- Adequate points for extensive kitchen equipments like waterpurifier, chimneys, microwave oven and other accessories
- Common areas : LED lighted
- 100 % DG backup for common area, lift and 500w for individual unit.



Railing

- SS with glass in balcony and MS in stair case.



Paint

- Internal : Two coats of JK wall putty with 1 coat primer and premium emulsion paint (Asian/Berger)
- External : Primer and weather coat paints (Asian/Berger)



Sanitary Fittings and fixtures

- CP/Ceramic Fittings (Jaquar/Grohe/Kohler)
- Wall hung WC of good quality
- CPVC & UPVC pipes

a
WELCOMING NEIGHBOURHOOD
awaits you.

How you contribute for protecting nature ?

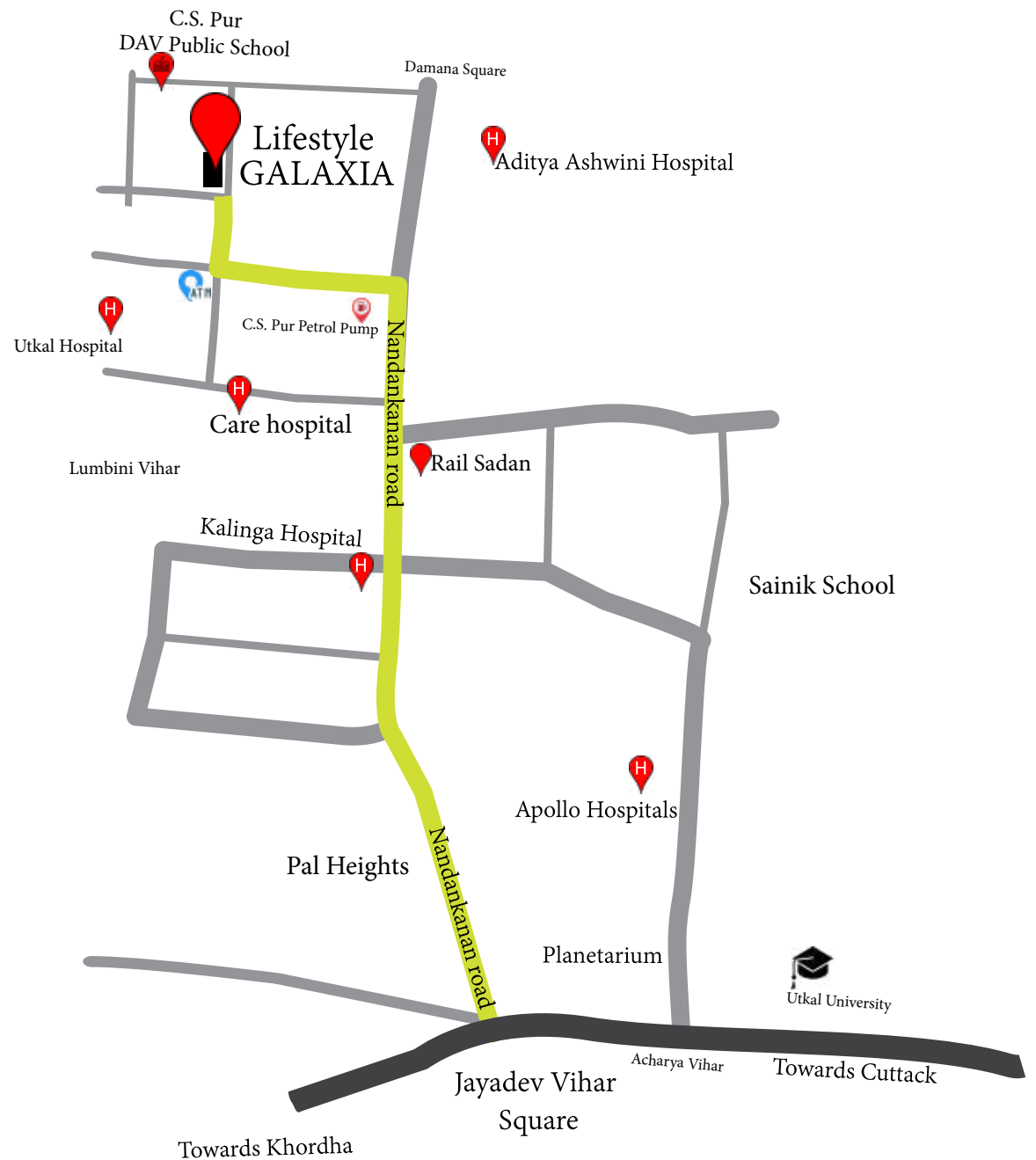
Based on the philosophy reduce, reuse and recycle, each galaxy home is designed in such a manner that it reduces the overall energy consumption hence reducing carbon footprints.

Healthcare Facilities

CARE Hospital : 5 min
Utkal Hospital : 5 min
Aditya Aswini Hospital : 5 min

Educational Institution

DAV School : 5 min
SAI International School : 10 min
ODM School : 10 min
VEM School : 10 min
KIIT International School : 15 min



Scan for the exact location



Your home,
YOUR GALAXIA
is awaiting you.



LIFE STYLE
PROPERTIES PVT. LTD

(A Member of CREDAI Bhubaneswar)
1st Floor, N-5/100, IRC Village, Bhubaneswar-751015
Ph. : 0674-3550411, Mob. : 9437975717
E-mail : lifestyle.bbsr@gmail.com
www.lifestyleproperties.co.in

Architect



AAKAAR Architects

N2/14, Nayapalli, Bhubaneswar-751015